

Permutations of order

every 2nd note

etc.

always root movement in thirds (major triads)

E+ G+ Bb+

dim. min.7 min.7 cluster cluster, etc.

dim.7 1/2 dim min.7

upper and lower neighbour notes

version II (reduced)

o b a

o b a

Continue searching for octave displacements

version III (J = ca. 52)

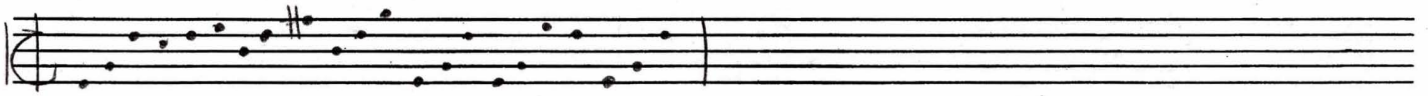
overlap

(no doubling)

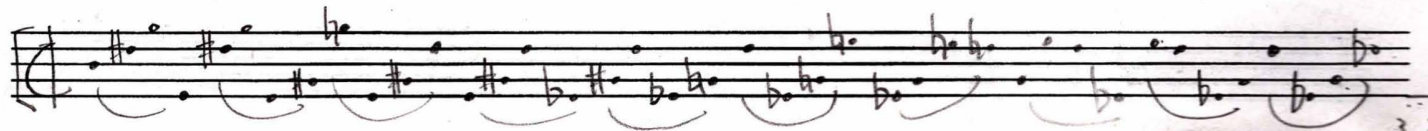
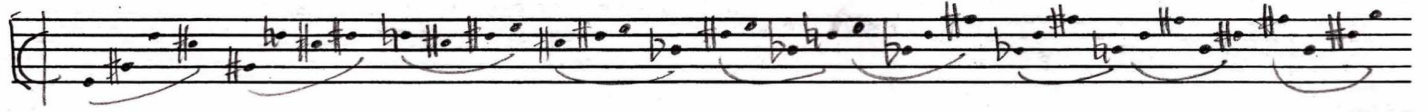
overlap

overlap

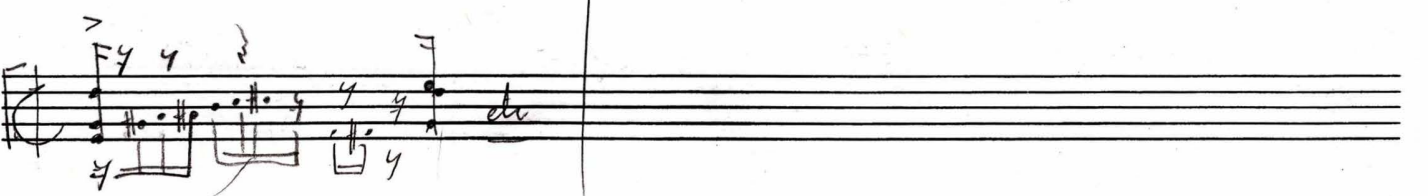
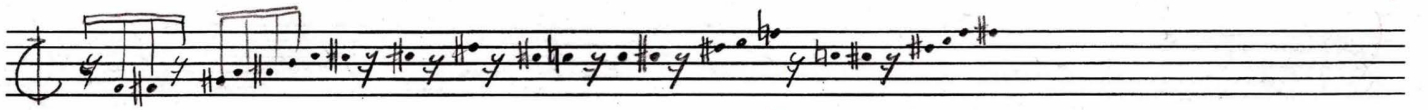
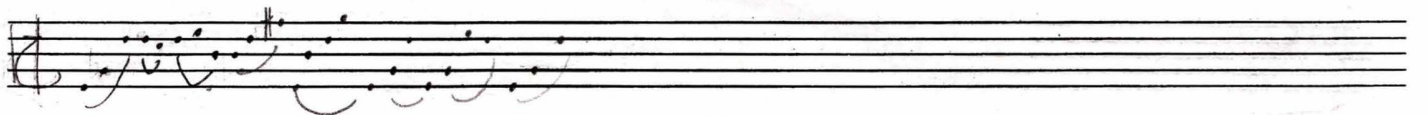
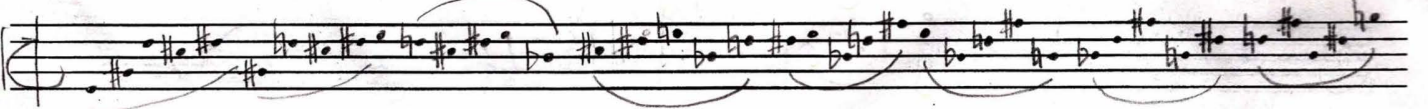
h e b = b

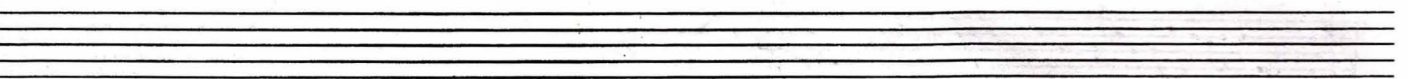
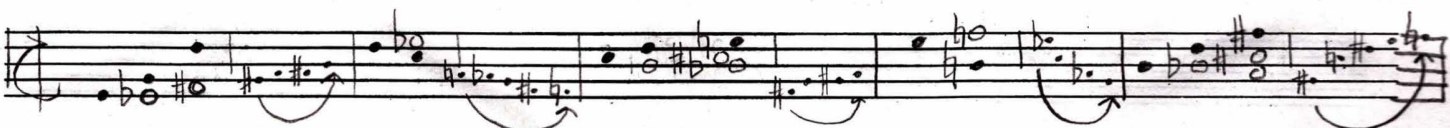
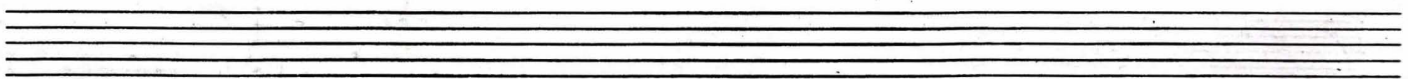
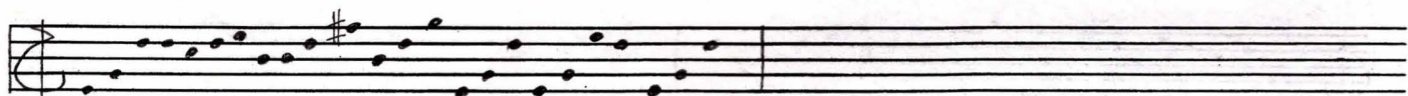


Groups of four



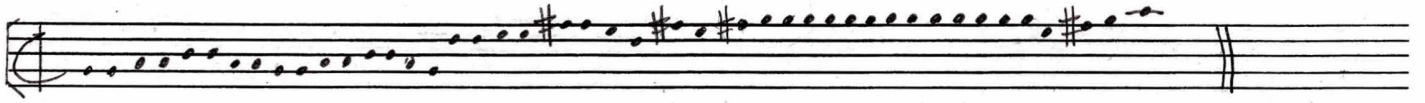
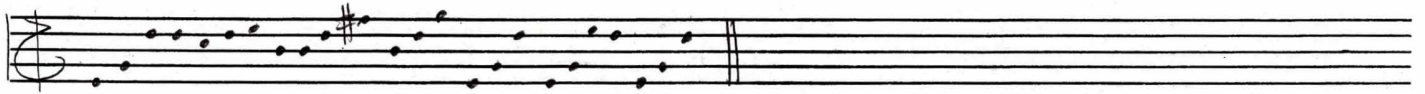
Groups of five



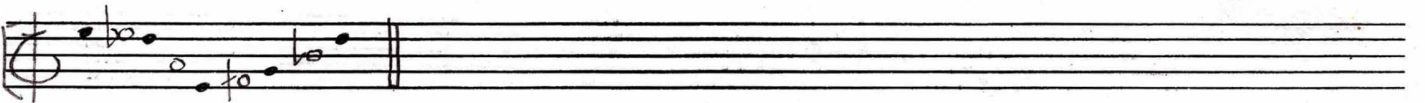
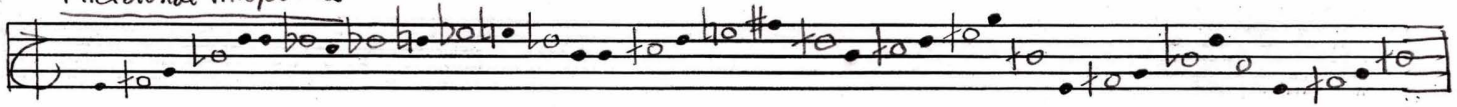


mp1

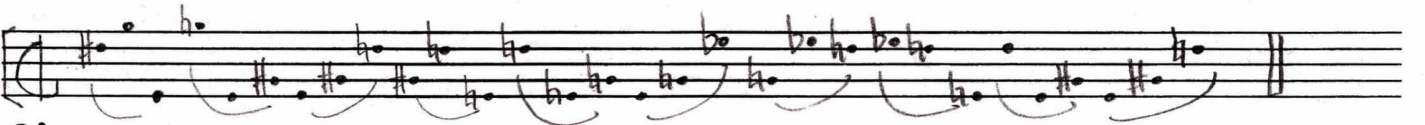
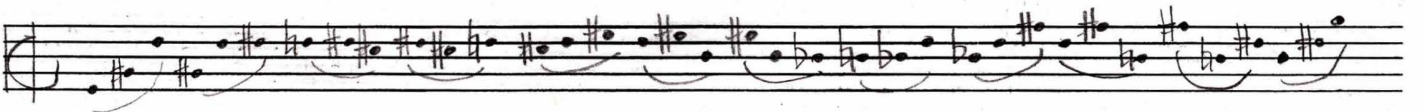
Instrumentation?



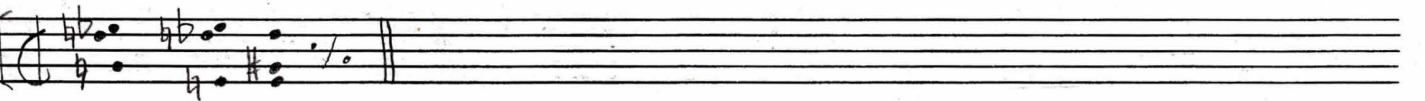
Microtonal midpoints



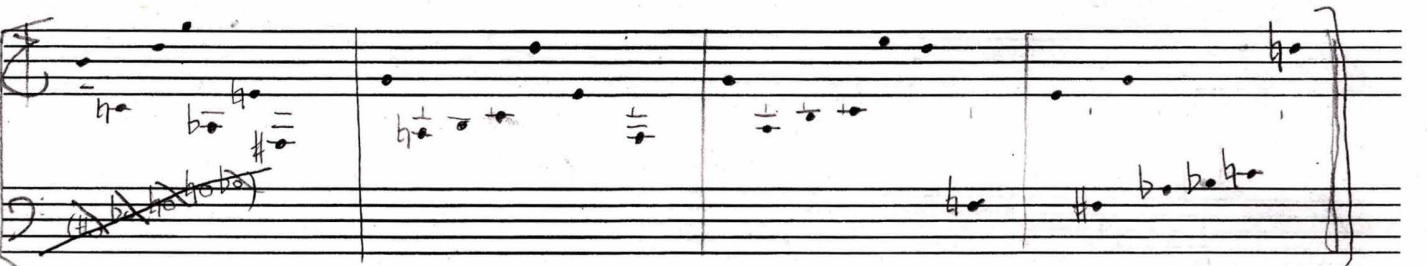
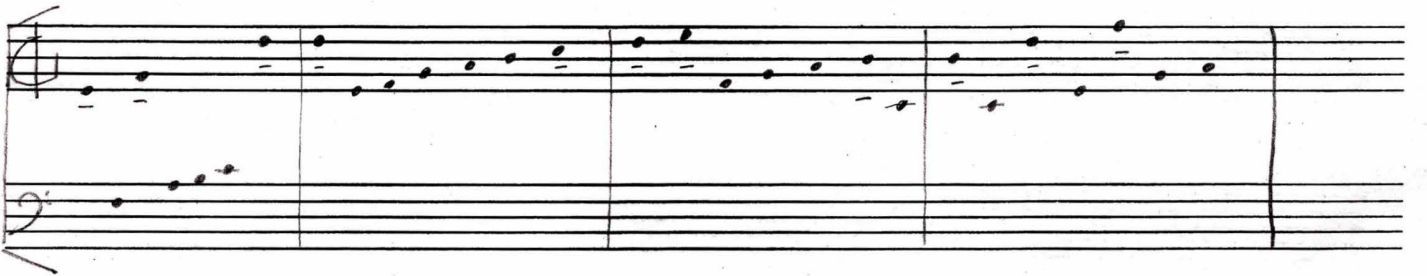
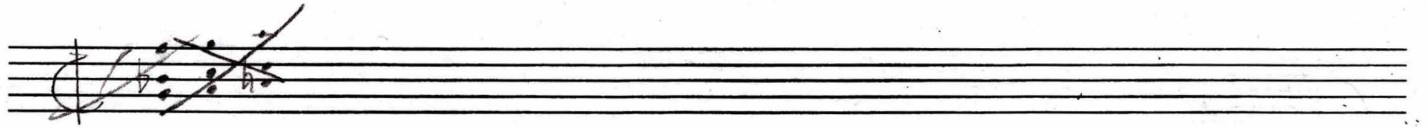
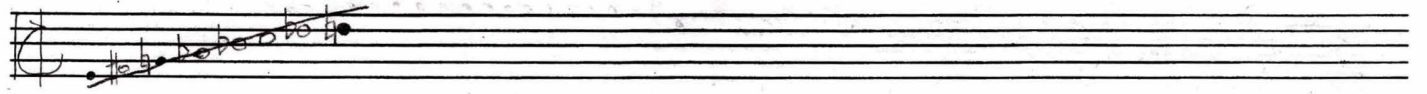
Groups of threes



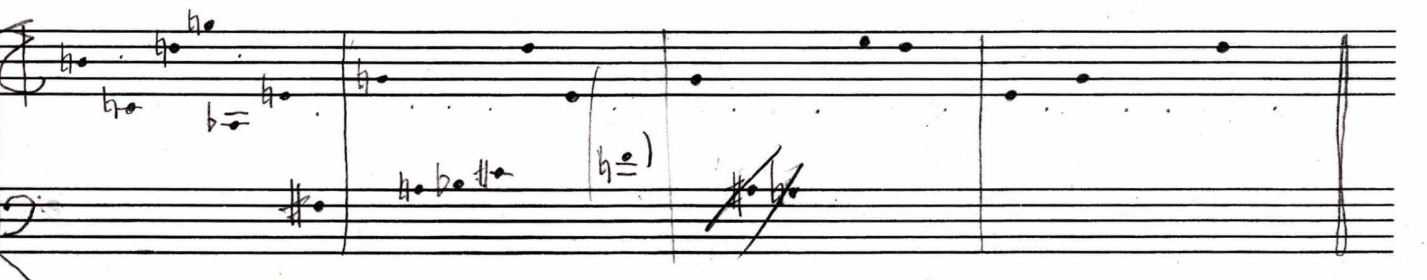
Chords



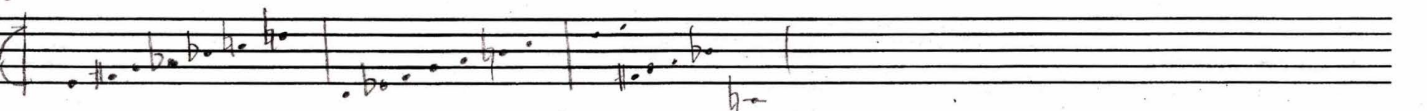
Microtonal harp?
Microtonal piano? Toy piano? Celesta? Piano? Prepared piano.
mpi



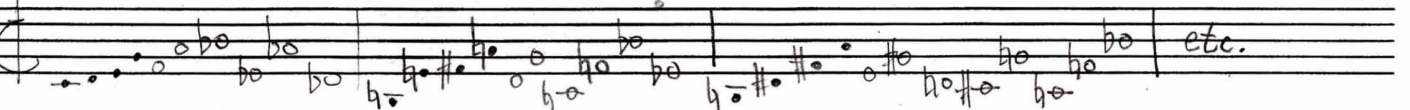
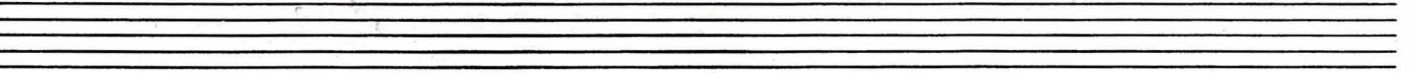
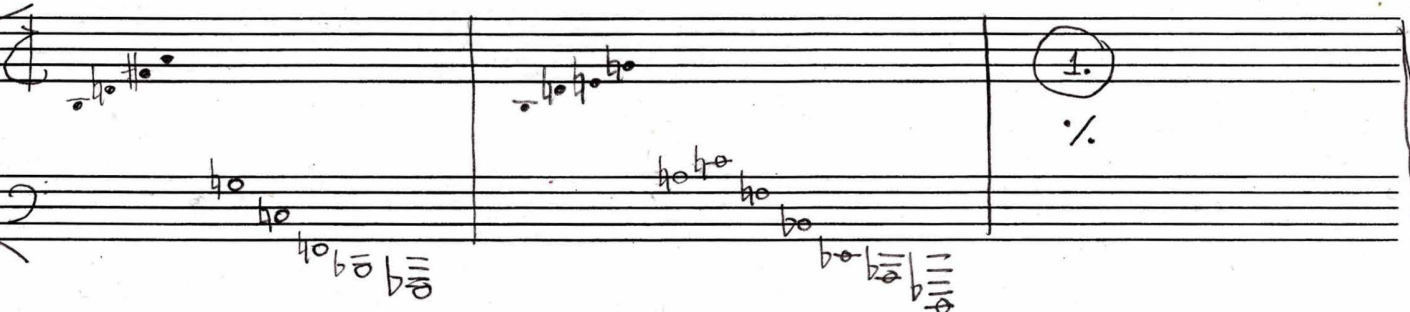
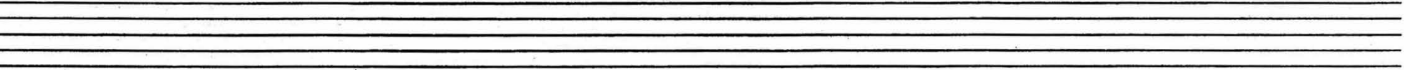
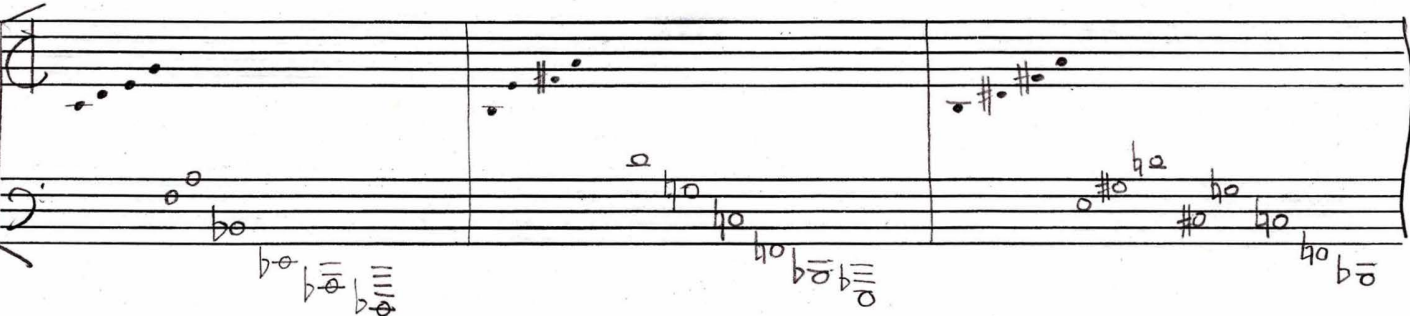
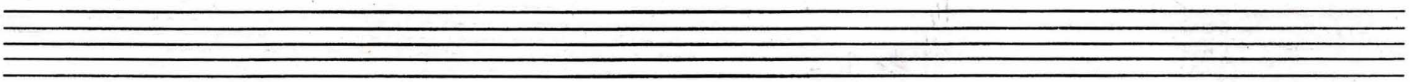
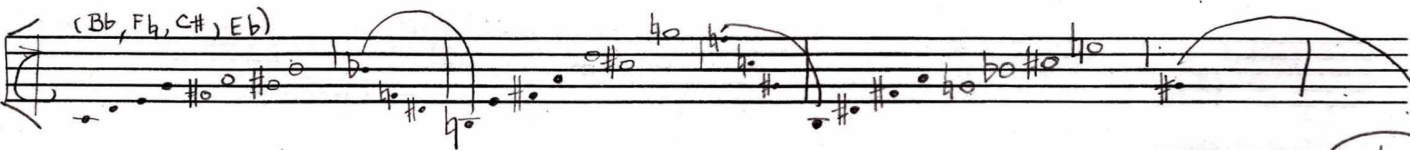
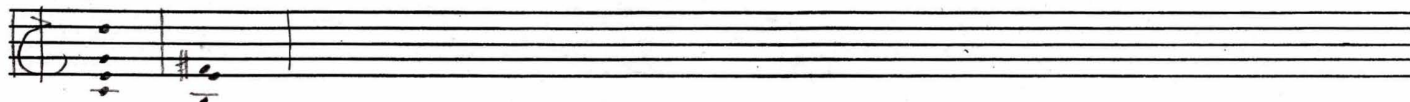
(with repeated fragments)



0554



C9 add7
Bsus4



mpl

Handwritten musical notation on a single staff, featuring a treble clef and a series of notes with accidentals.

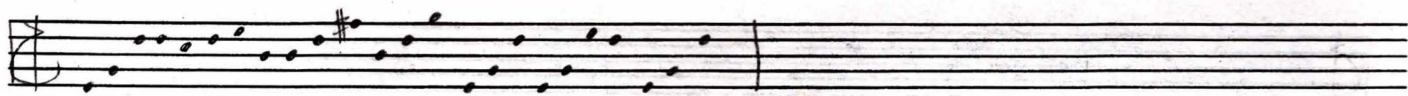
Handwritten musical notation on two staves, showing complex chord structures and a bass line.

Handwritten musical notation on a single staff with various annotations like "C9", "ho", and "x".

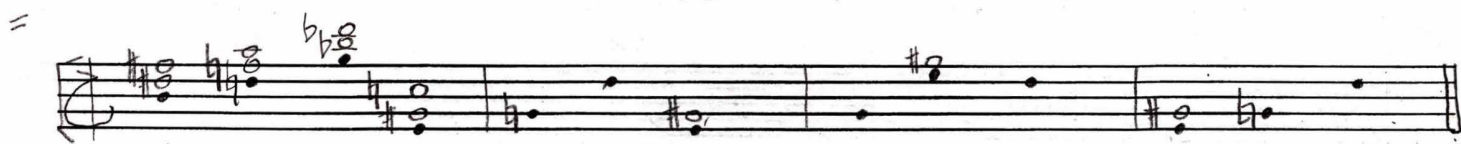
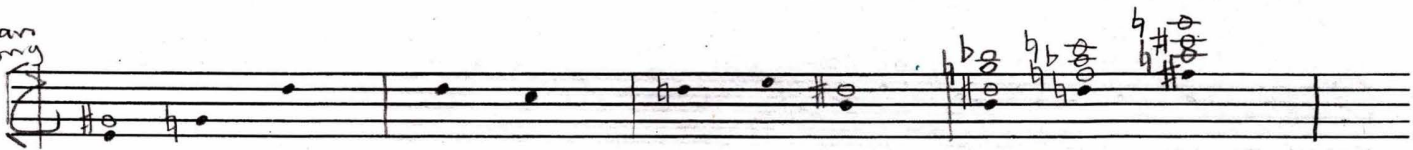
Handwritten musical notation on two staves, including a double bar line and a "C9" annotation.

Reduced.

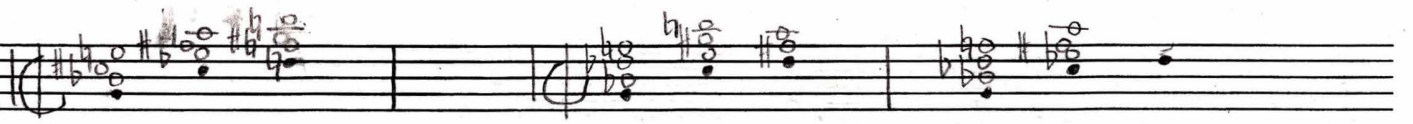
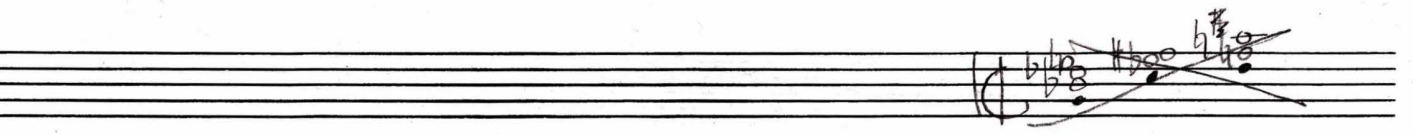
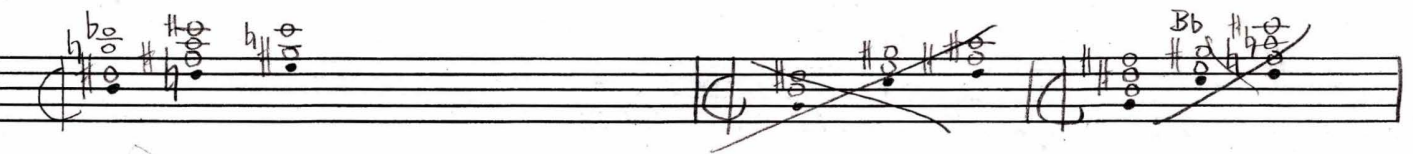
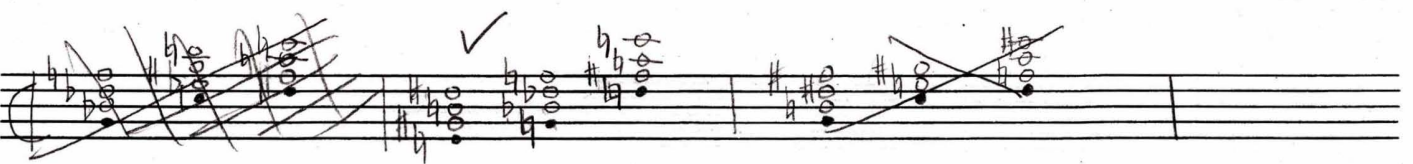
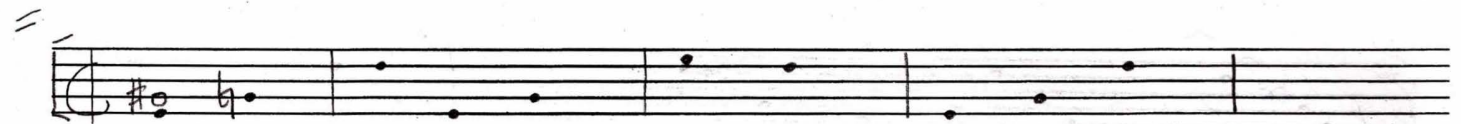
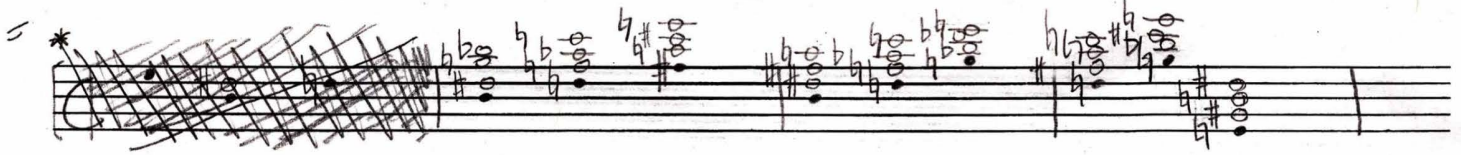
{start 3

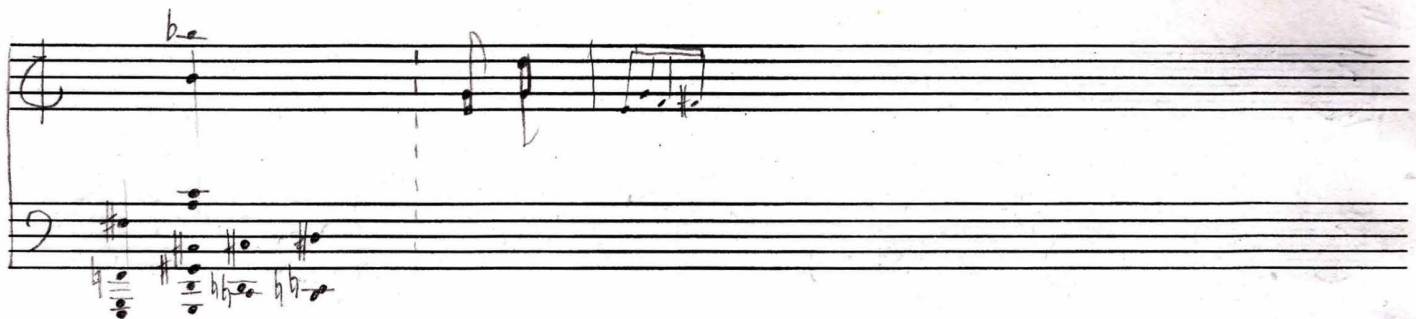
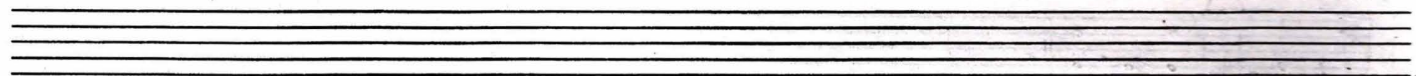


Tertian harmony



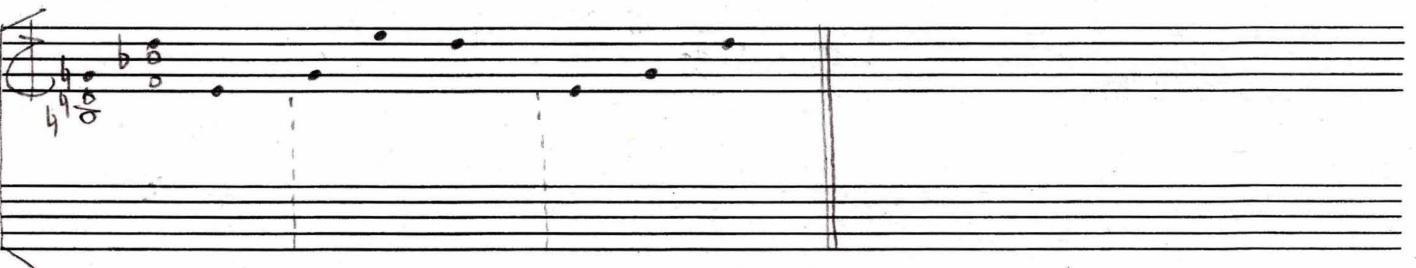
Tertian harmony groups of threes

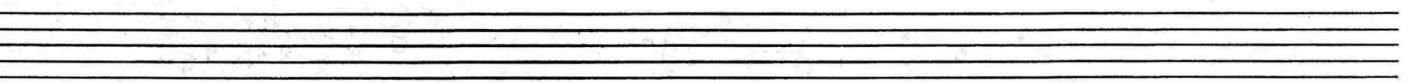
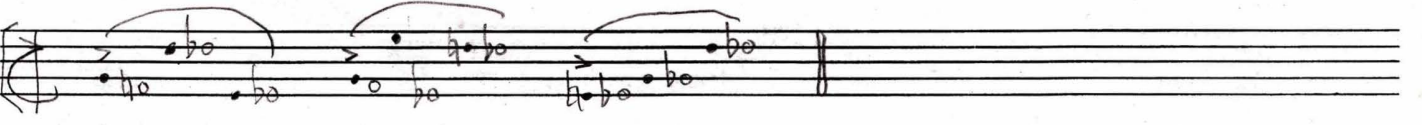
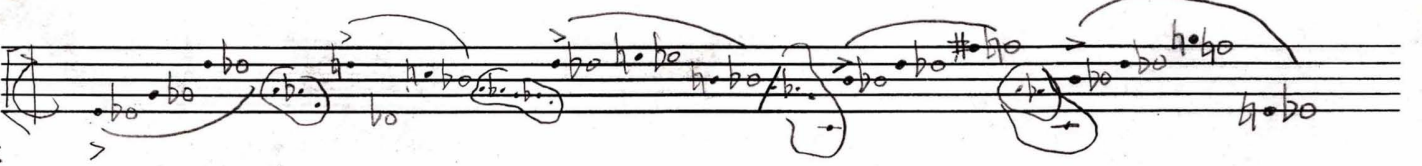
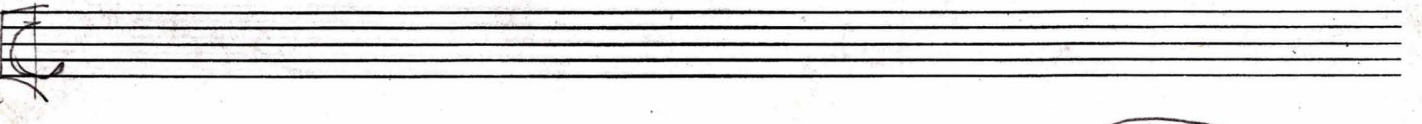
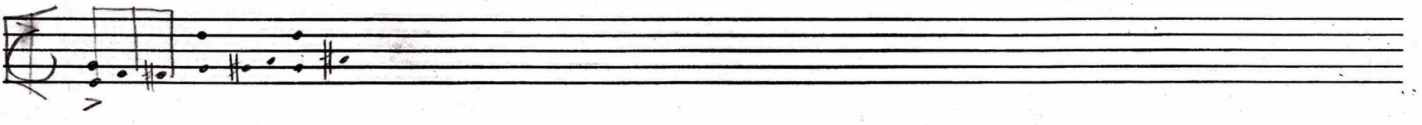
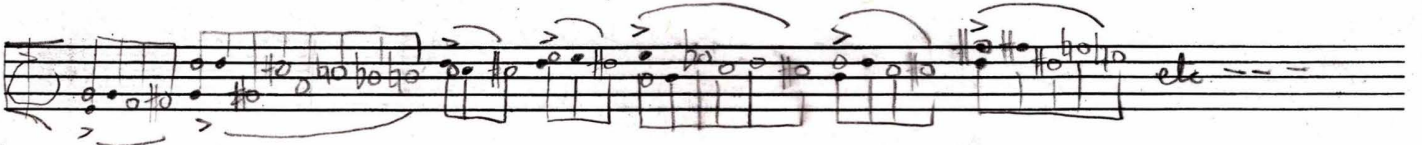




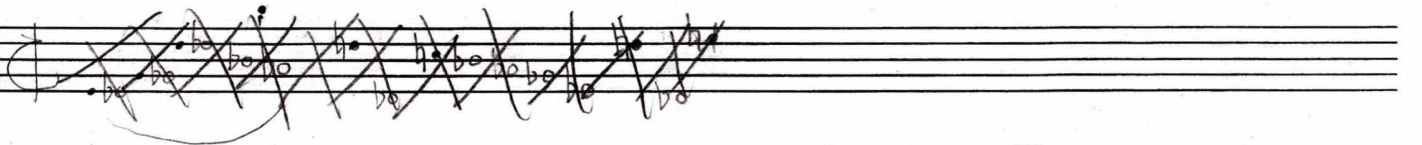
Triads, fragments with root movements (progressions) in thirds.

E+ G+ Bb D+ F+ D+ F#+ A+ B+ D+ F+(dom 9) A+





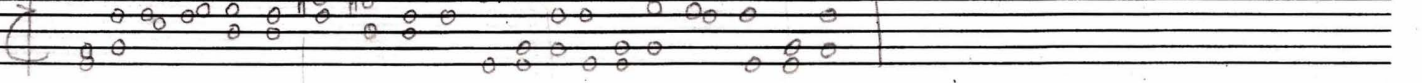
version II



Ped →

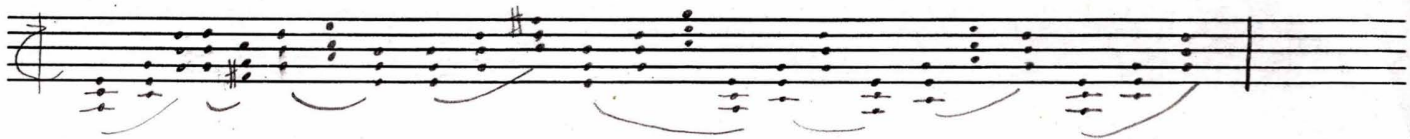


-3 P5 +2 +2 P4 -3 +3 P5 -3 P4 -10 -3 P5 -7 -3 +6 +2 -7 -3 P5





Modal

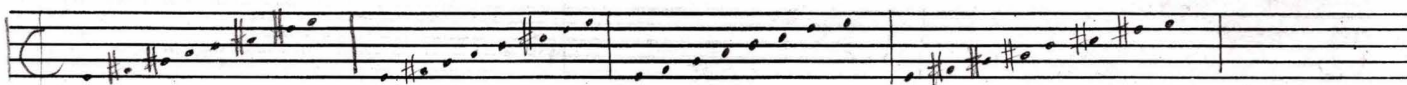


E-Ionian

E-Dorian

E-Phrygian

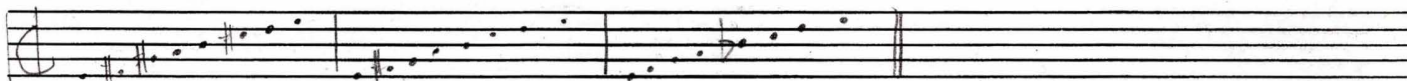
E-Lydian



E-Mixolydian

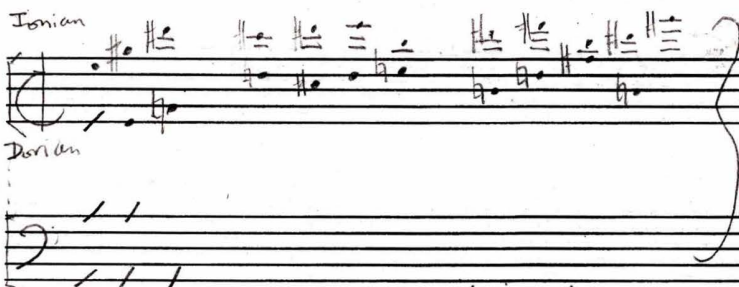
E-Aeolian

E-Locrian



Ionian

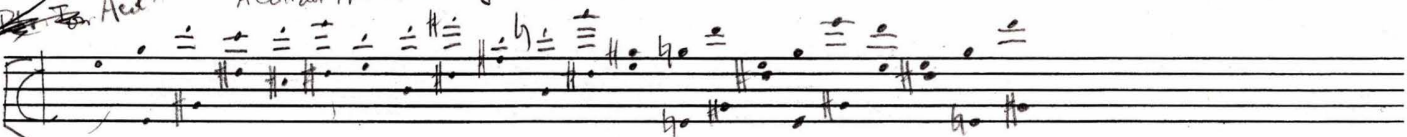
Dorian



Try different combination of mode

~~D-Ion~~ Aed

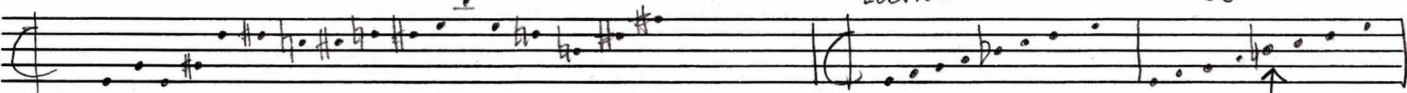
Aeolian Mode (original)



Ly¹¹ ↓ composite lw

Locrian

Phrygian



Aeolian

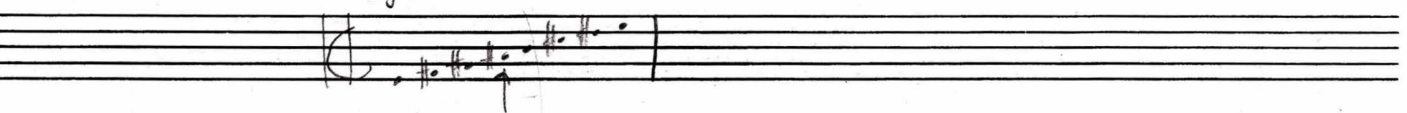
Dorian

Mixolydian

Ionian



Lydian



Begin slow, accelerando.

loco

8ve ----

groups of four →

groups of three →

Rotation about E-natural (with canon(s) at lower fifth(s))

mpl

C G D D A^(dim. 7) A^(#9) D A E⁺ E B^(dim. 7) F^{#+}

E B F[#] (clear) A⁺ D A ??? E

codetta

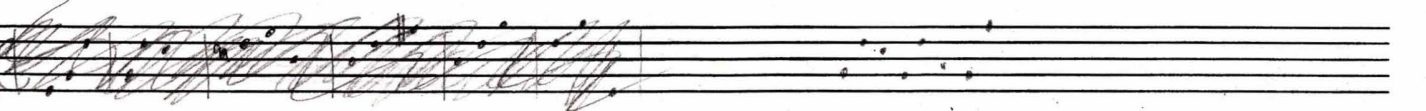
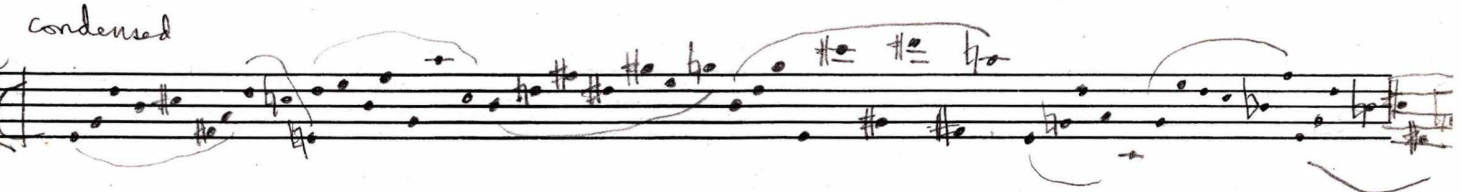
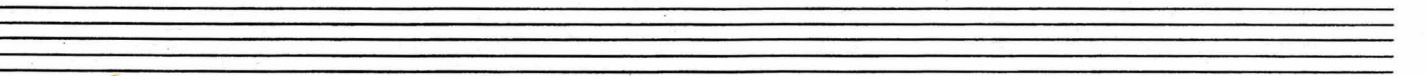
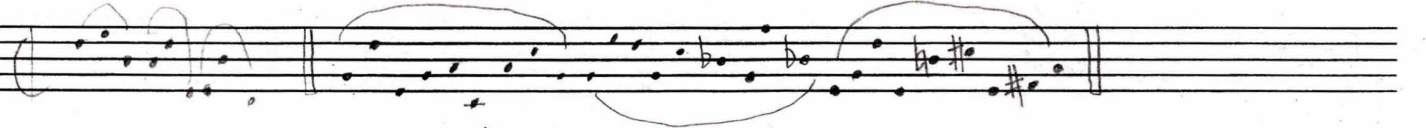
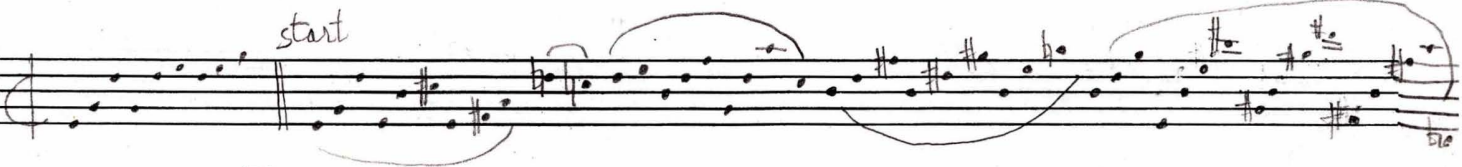
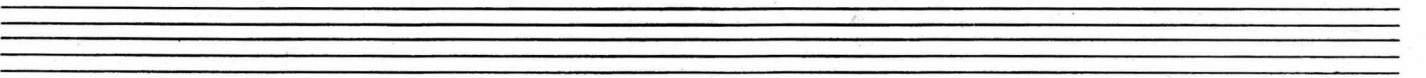
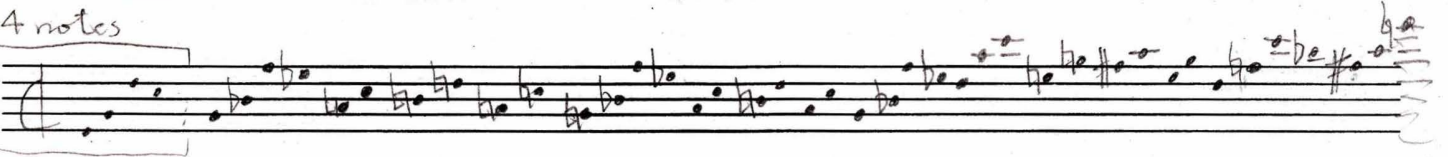
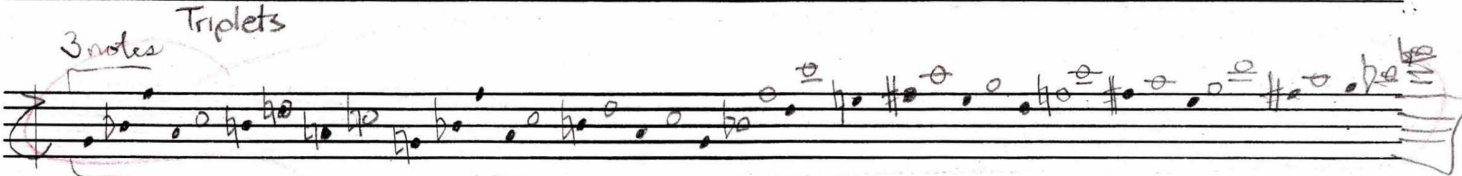
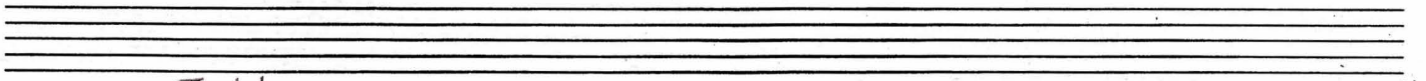
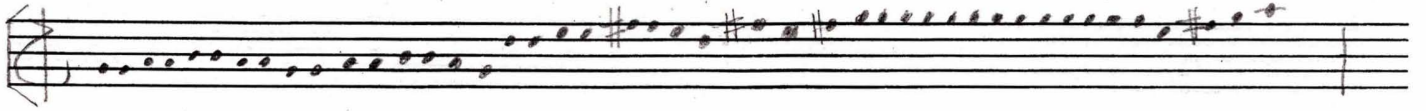
chromatic alterations of pandiatonic canon

= with "complementations"

version II

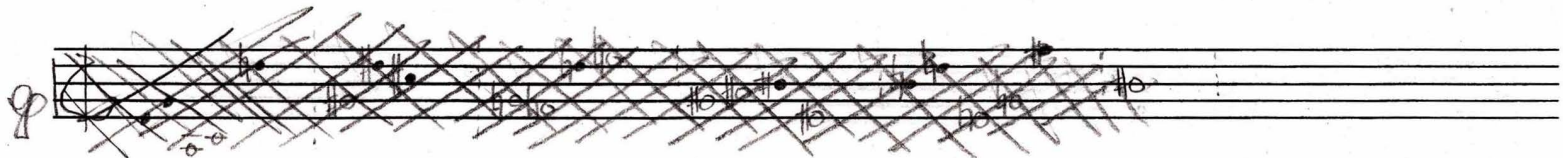
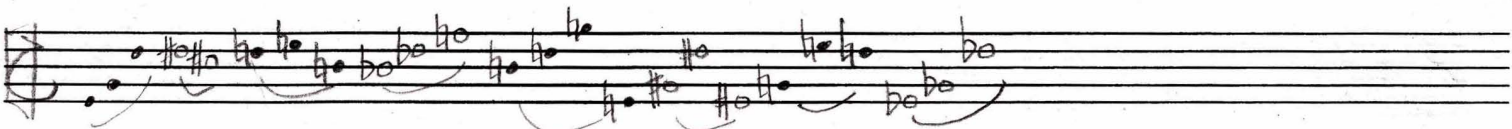
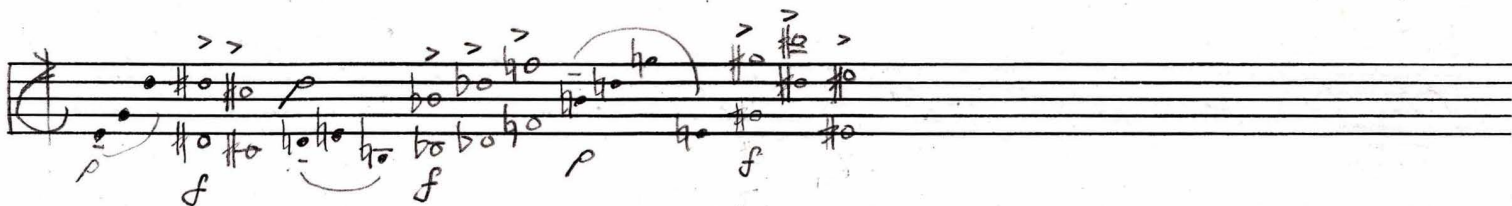
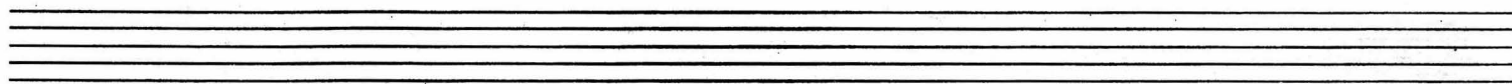
(♩ = 52-54)

version II

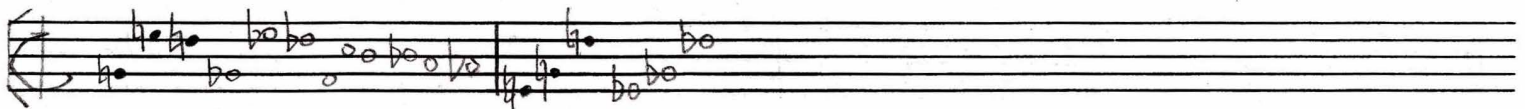
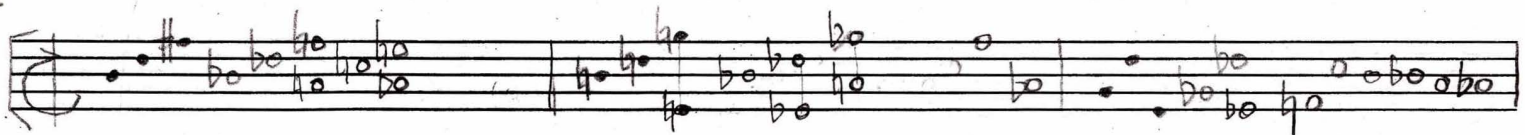
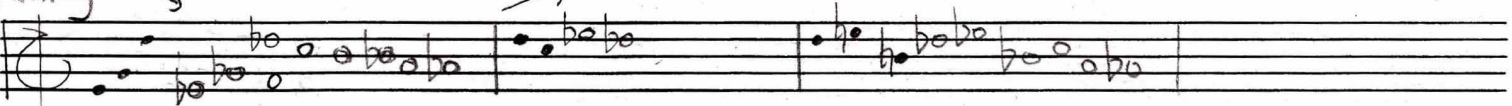


w/ complementation

???



falling →



Handwritten musical notation on a single staff, featuring a treble clef and a key signature of two flats (B-flat and E-flat). The notation includes a series of notes with stems and beams, and a measure with a whole note chord. Below the staff, there are some scribbled-out notes and a small diagram of a piano keyboard.

Handwritten musical notation on a single staff, featuring a treble clef and a key signature of two flats. The notation includes a series of notes with stems and beams, and a measure with a whole note chord.

Handwritten musical notation on a single staff, featuring a treble clef and a key signature of two flats. The notation includes a series of notes with stems and beams, and a measure with a whole note chord.

Handwritten musical notation on a single staff, featuring a treble clef and a key signature of two flats. The notation includes a series of notes with stems and beams, and a measure with a whole note chord. A tempo marking "(♩) = 56'" is written above the staff.

Handwritten musical notation on a single staff, featuring a treble clef and a key signature of two flats. The notation includes a series of notes with stems and beams, and a measure with a whole note chord. Above the staff, there are some scribbled-out notes and a small diagram of a piano keyboard.

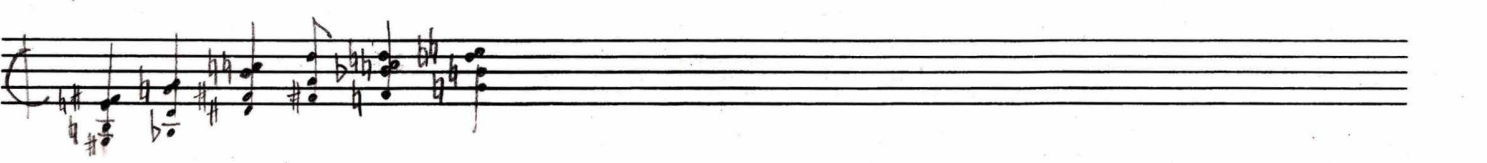
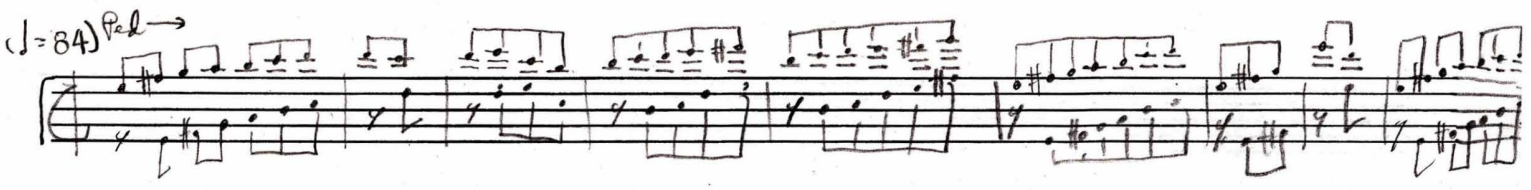
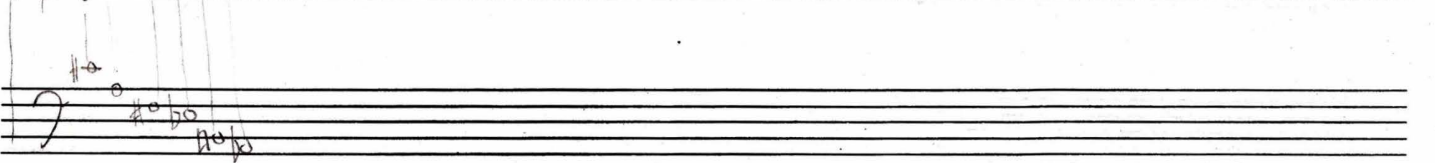
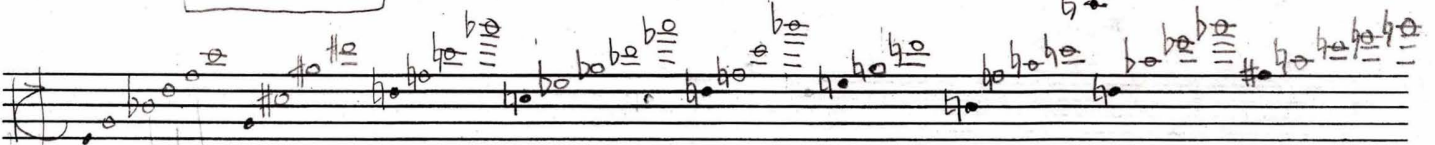
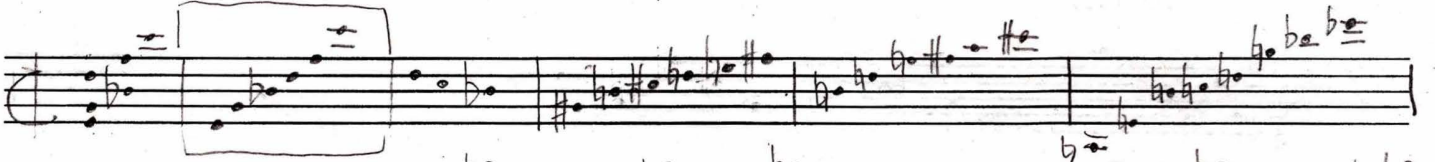
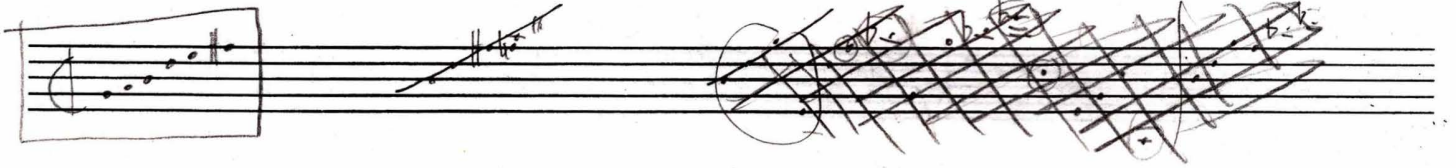
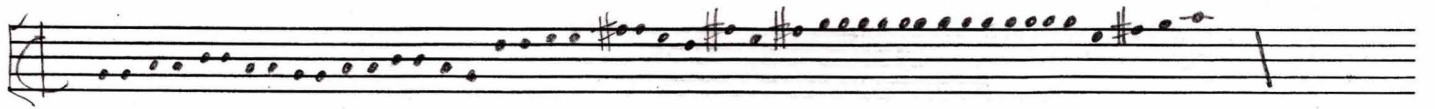
Handwritten musical notation on a single staff, featuring a treble clef and a key signature of two flats. The notation includes a series of notes with stems and beams, and a measure with a whole note chord.

Handwritten musical notation on a single staff, featuring a treble clef and a key signature of two flats. The notation includes a series of notes with stems and beams, and a measure with a whole note chord. Above the staff, there are some scribbled-out notes and a small diagram of a piano keyboard.

Handwritten musical notation on a single staff, featuring a treble clef and a key signature of two flats. The notation includes a series of notes with stems and beams, and a measure with a whole note chord. Above the staff, there are some scribbled-out notes and a small diagram of a piano keyboard.

Handwritten musical notation on a single staff, featuring a treble clef and a key signature of two flats. The notation includes a series of notes with stems and beams, and a measure with a whole note chord. Above the staff, there are some scribbled-out notes and a small diagram of a piano keyboard.

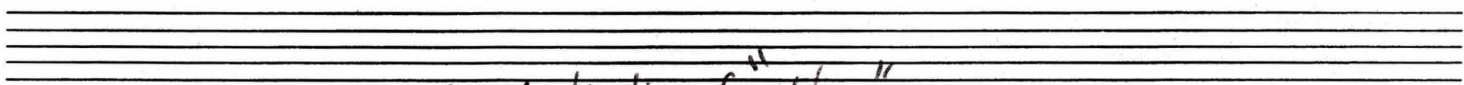
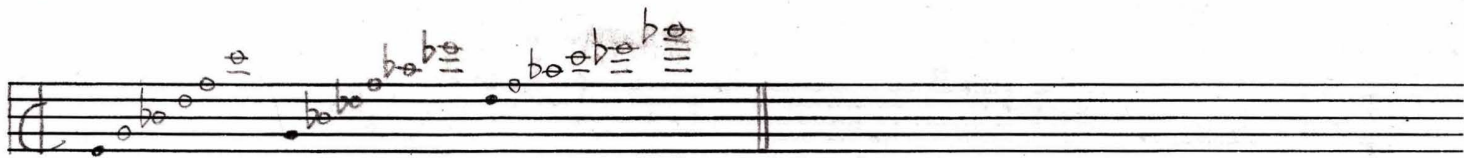
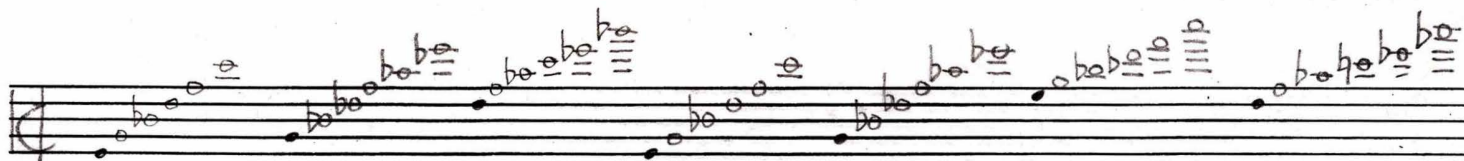
Handwritten musical notation on a single staff, featuring a treble clef and a key signature of two flats. The notation includes a series of notes with stems and beams, and a measure with a whole note chord. Above the staff, there are some scribbled-out notes and a small diagram of a piano keyboard.



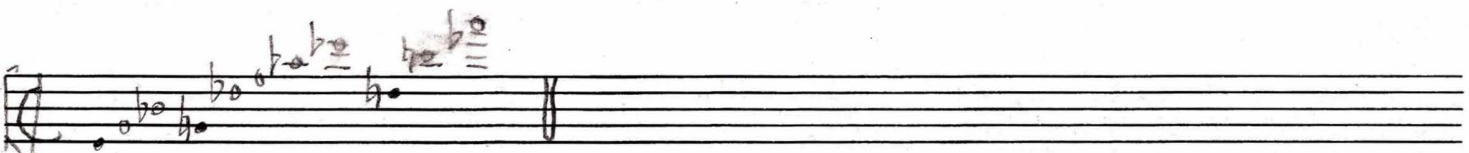
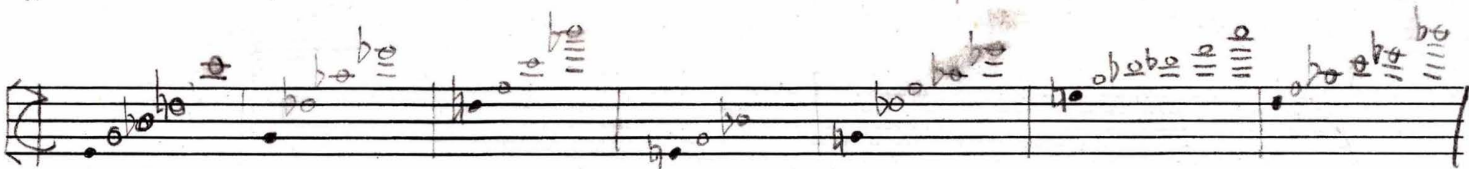
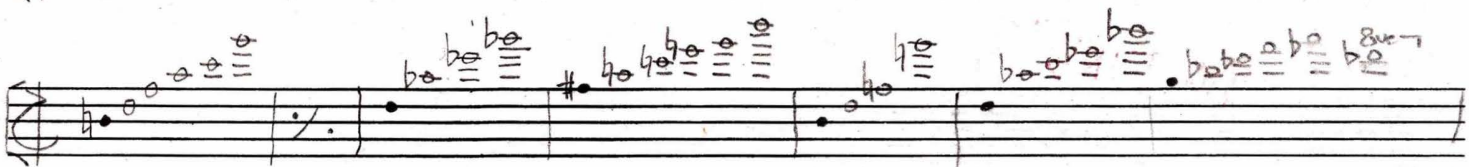
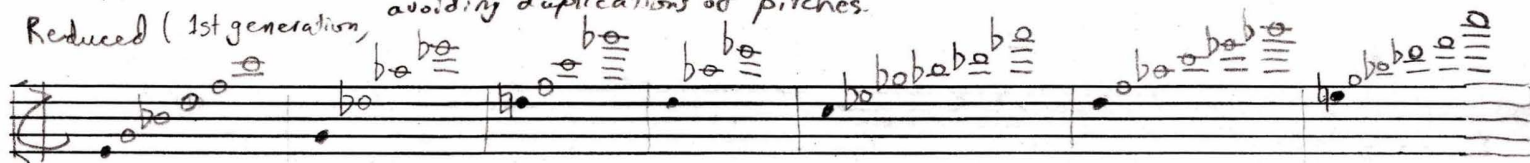
melody (with rotations)

harmony (with rotations)

C7



Reduced (1st generation, avoiding duplications of pitches.)



3 7 0 2 2 2 5 3 4 7 3 5 1 5 3 7 1 0 3 9 2 1 0 3 7

[A] = "BIG TUNE" ?

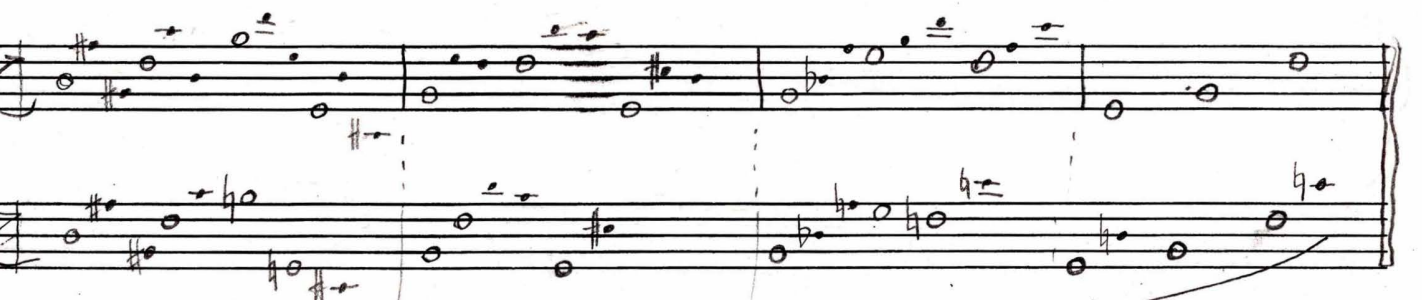
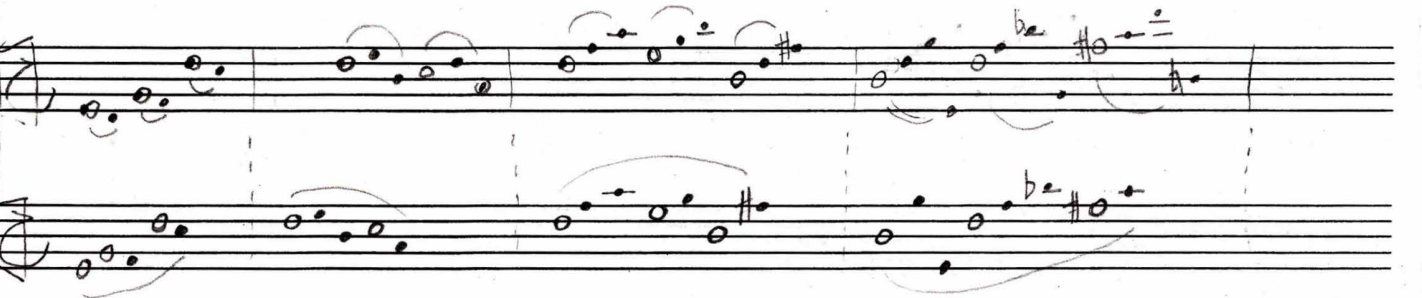
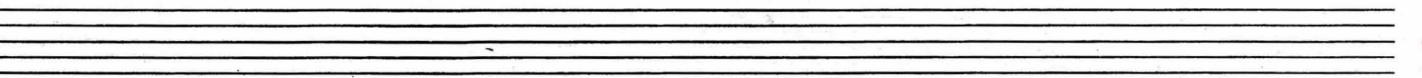
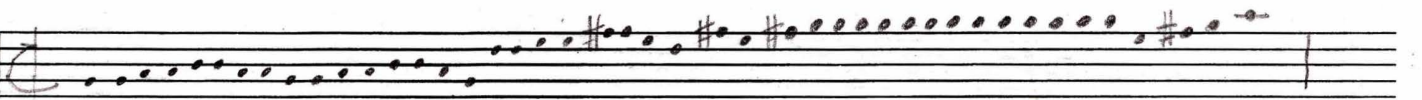
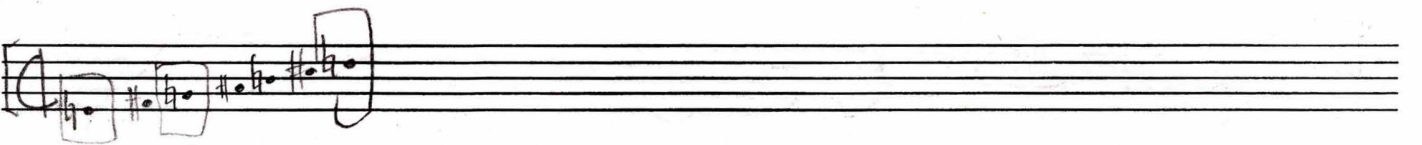
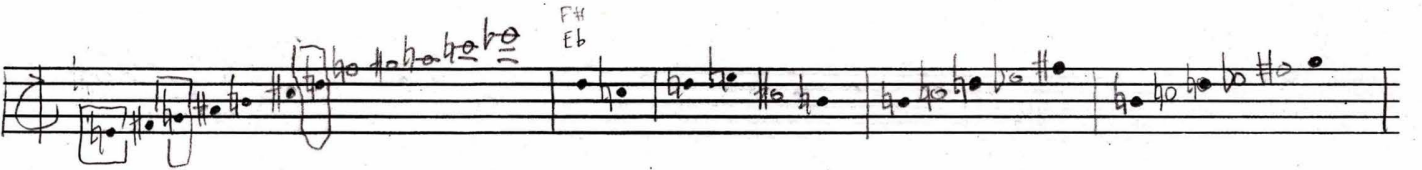
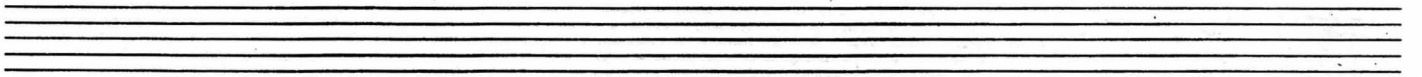
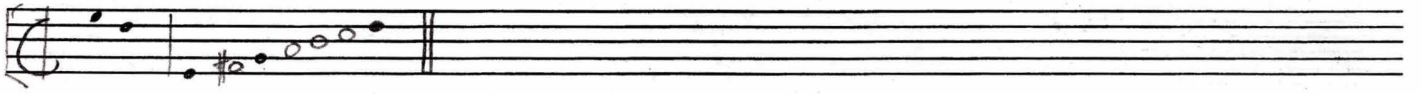
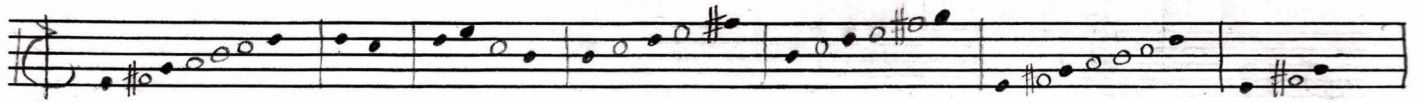
[A] 3 7 | 3 7 3 7 3 7 3 7 3 7

[B] 2 2 2 [C] 2 5 2 5 2 5

[D] 3 4 3 4 3 4 3 4

[E] 3 5 3 5 3 5 3 5 [F]

[G] 1 0 3 [H] [I]



Handwritten musical notation on a single staff, featuring a series of eighth and sixteenth notes with various accidentals.

Handwritten musical notation on a single staff, continuing the melodic line with some slurs and ties.

Handwritten musical notation on a single staff, showing a transition to a more complex rhythmic pattern with some triplets.

Handwritten musical notation on a single staff, starting with a section labeled "ninth chord" that is heavily scribbled out with black ink.

Handwritten musical notation on a single staff, featuring a sequence of chords and notes with a red line drawn through the staff.

Handwritten musical notation on a single staff, including a section labeled "comp" and "Vibe" with some rhythmic markings.

Handwritten musical notation on a single staff, showing a sequence of notes with time signature changes from 3/4 to 2/4.

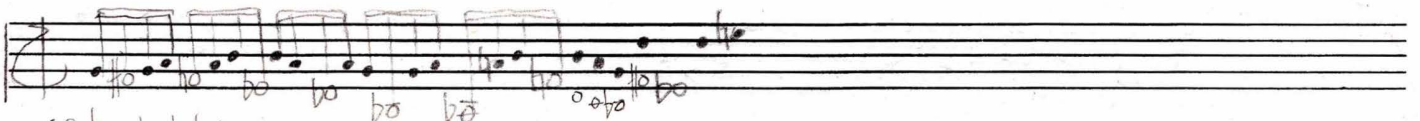
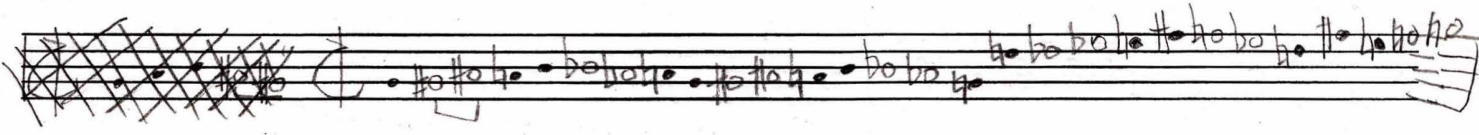
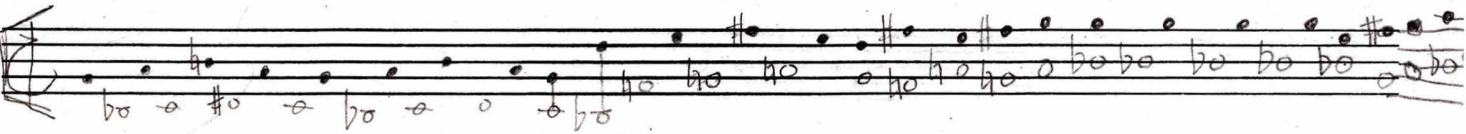
Handwritten musical notation on a single staff, including a sequence of notes and a chord progression labeled "D# C# B# / E G# F# G# A#".

Handwritten musical notation on a single staff, featuring a sequence of chords and notes with some annotations like "cont. 8/2" and "8/2".

Handwritten musical notation on a single staff, showing a sequence of notes with various accidentals and a "no Bb" annotation.

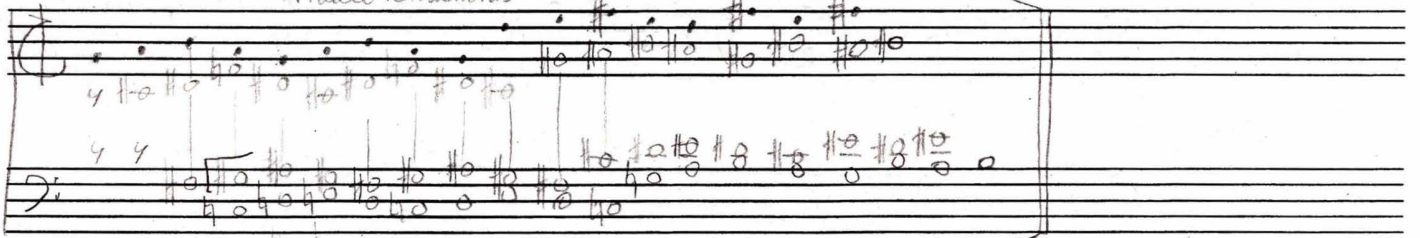
Handwritten musical notation on a single staff, including a sequence of notes and chords with some circled notes.

Handwritten musical notation on a single staff, concluding with a sequence of notes and chords, including a circled note at the end.

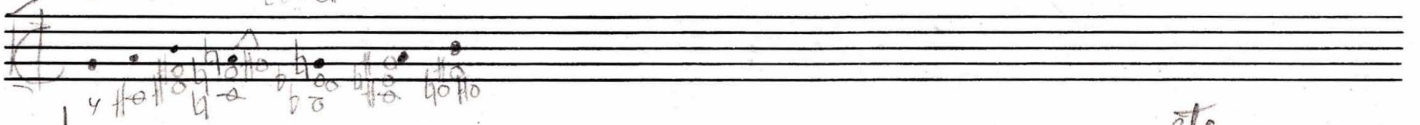


(r.h. + l.h.)
8vc →

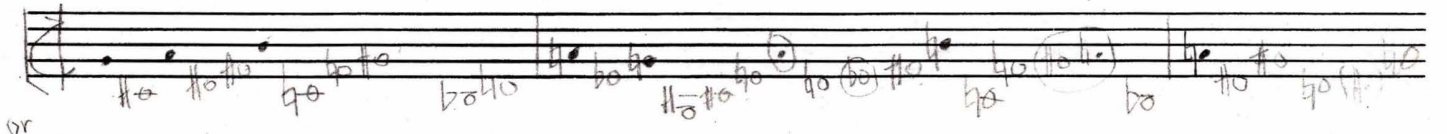
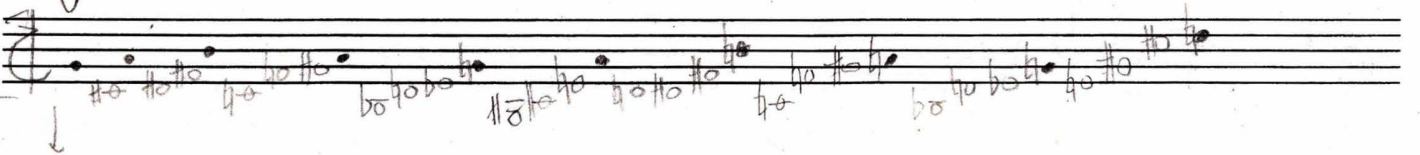
Triadic Tetrachords



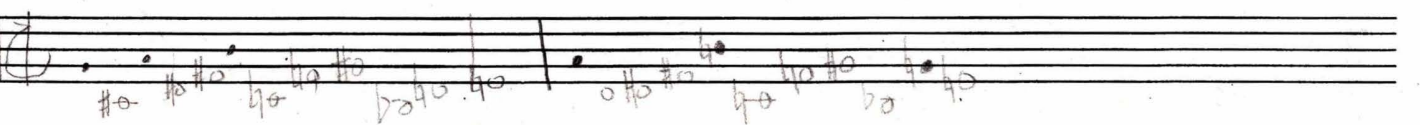
B+ F# G- A#
E# C#



etc



or



Harmonic "spectra" on "bass notes" of second part ---

etc. ---

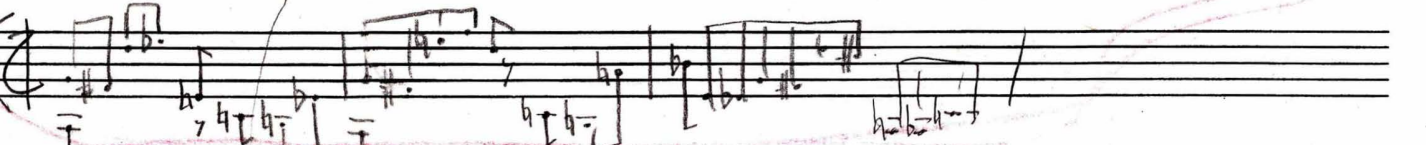
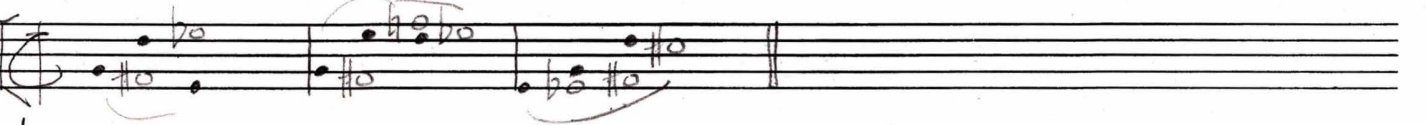
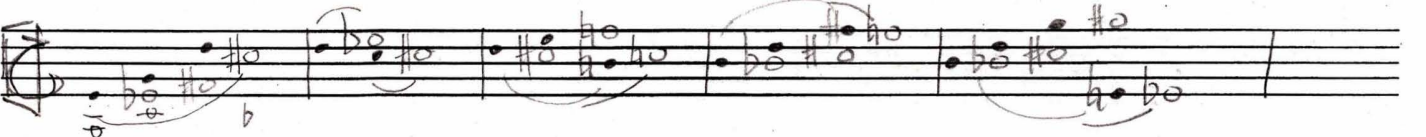
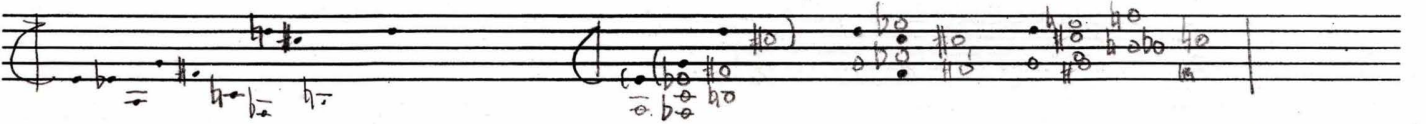
(♩ = ca. 96)

↓ ↓ ↓ etc.

reduce

T. Bell.

sub.



mp1

||

||

line

||

||

||

or -
A+ Eb+ b-

(Play each fragment in retrograde?)

14
54
30

5D (♩=84-88) 4D (♩=72) 3D 5D 3D 2D (4D)

(5) (4) (3) (3) (1) (5) (3) (2)

G# A# B# C# D# E# F# G A# B# C# D# E# F#

Aolian

Skips to Stepwise motion.

7D 2D 4D 5D 7D 7D 6D 7D

Chords (Harmonies)

C# Bsus4

Bdom.7 Bmin.7 Emin.7

(a-) g# (c-) b, bb (g-) f#, f (b-) bb (f-) e, eb (d-) c# (c#) c, b (e) eb, d (g#) g (g) f#, f, (b) bb, a
 (d) c# (f) e eb (c) b, bb (e) eb (bb) a, g# (g) f# (f#) f, e (a) g#, g (c#) c (c) b, bb (e) eb, d

(e) eb (b) bb, a (e) eb, d (a) g#, g (c) b- (g) f#, f (c#) c, b (e) eb (a) g#, g (g) f#, f (c#) c (g) f#, f, (b) bb, a
 (a) g# (e) eb, d (a) g#, g (d) c#, c (f) e (c) b, bb (f#) f, e (a) g# (d) c# c (c) b, bb (f#) f (c) f, b (e) eb, d

This block contains a handwritten musical score for guitar. It consists of several systems of music, each with a staff and a corresponding guitar chord diagram. The diagrams are annotated with blue circles and lines, indicating specific chord voicings or fingerings. The score includes various musical notations such as notes, rests, and bar lines.

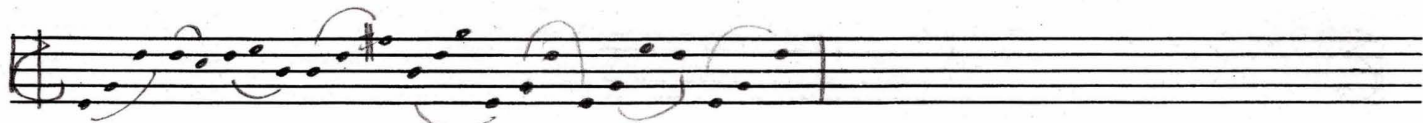
Key annotations and markings include:

- 5/8**: A time signature marking on the second system.
- 3 4**: A marking on the third system.
- how ch...**: A handwritten note on the third system.
- how**: A handwritten note on the fourth system.
- C# - 4**: A marking on the fourth system.
- how**: A handwritten note on the fifth system.

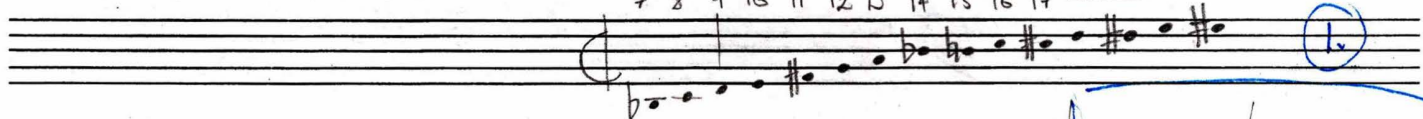
The chord diagrams are complex, showing multiple strings and frets, with some diagrams enclosed in blue circles. The notation is dense and appears to be a personal or experimental manuscript.

Handwritten musical notation on five staves. The notation is heavily annotated with blue circles and brackets, indicating specific musical phrases or chords. Above the first staff, there are handwritten annotations: $7/8$ ✓, $5/8$ ✓, $7/8$ ✓, and $7/8$ ✓. Above the second staff, there are handwritten annotations: $5/8$ ✓, $5/8$ ✓, and $5/8$ ✓. Above the third staff, there are handwritten annotations: $3/8$ ✓ and $5/8$ ✓. The notation includes various rhythmic values (quarter notes, eighth notes, sixteenth notes) and accidentals (sharps, flats, naturals). The staves are connected by a vertical dashed line, suggesting a single melodic line across different systems.

Handwritten musical notation on three staves. The first staff contains a sequence of notes: a , c , g , b , f , d , $c\sharp$, e , $g\sharp$, g , b . Below this sequence, there is a series of chords represented by circles with notes inside, connected by a wavy line. The second staff shows a few notes, and the third staff shows a chord with notes a , c , g , b .



7 8 9 10 11 12 13 14 15 16 17

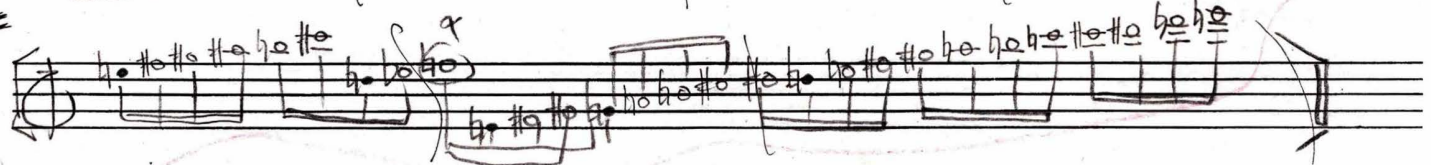


D# C# B# / E# F# G# A#

D# C# B# / E# F# G# A#

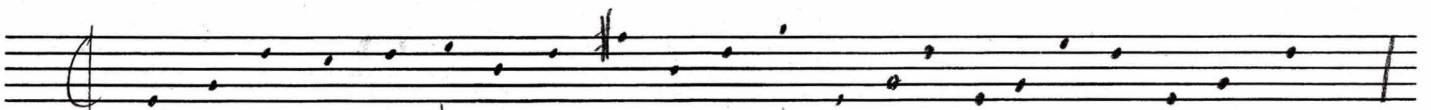
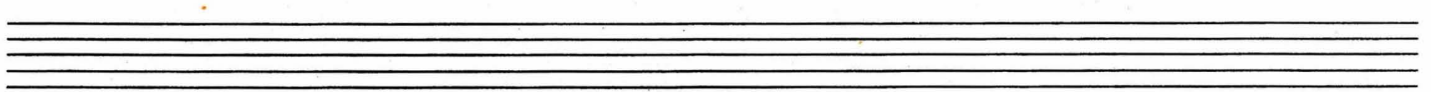
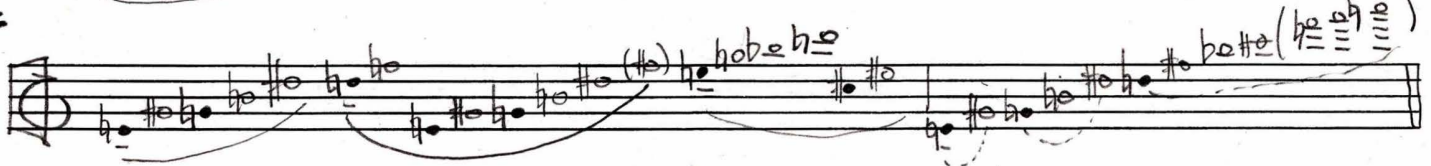
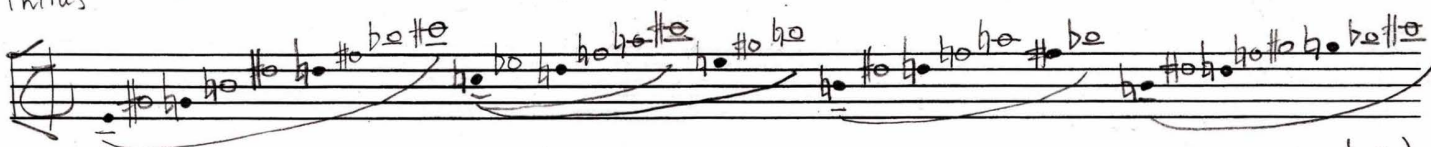
whole tone (acoustic) scales
(♩ = 100 - 104)

E# F# G# A



♯ 5 6 7 9 11 13 17

Thirds



vc. cb. vc. cb. vc. vla. vla. vc. cb. vc. vla.